



# **LYCHEE CROPS CULTIVATION PROCESS**

# BEFORE TRANSPLATING

**FIRST DAY**

**CHOOSE ANY ONE**



**ORGANIC MANURE**



**AGRO BOOSTER**



**AFTER 1 DAY**

**NOW START THE TRANSPLATING PROCESS**





# VEGATATIVE STAGE TO FLOWERING STAGE

**1st DAY**

**AGRO HUMIC  
EXTRACT ( 30ML )**



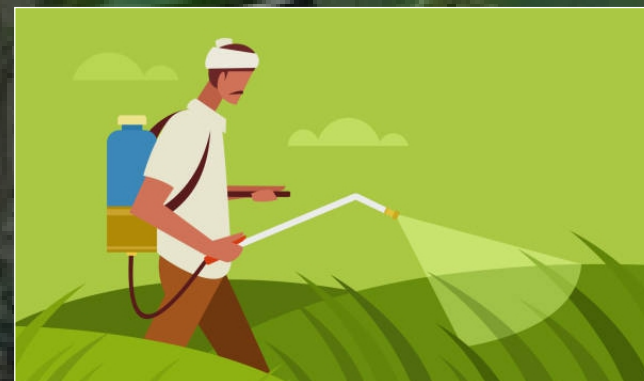
+

**ADD AGRO 80 PLUS  
( 50ML )**



+

**MIX WITH 15 LITRE  
WATER & SPRAY EVENLY**



# VEGATATIVE STAGE TO FLOWERING STAGE

**25TH DAY**

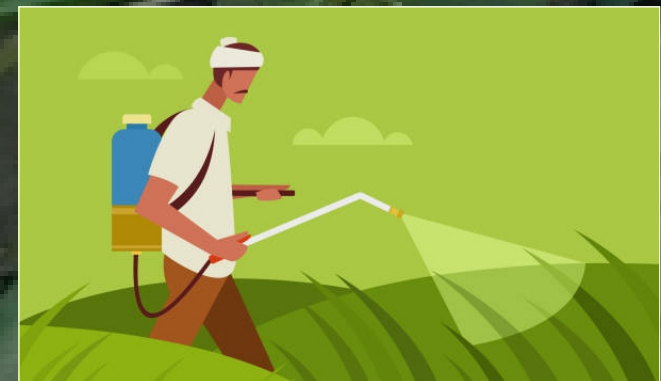
**AGRO CROP CARE  
( 30ML )**

+

**ADD AGRO 80 PLUS  
( 50ML )**

+

**MIX WITH 15 LITRE  
WATER & SPRAY EVENLY**



# VEGATATIVE STAGE TO FLOWERING STAGE

**45th DAY**

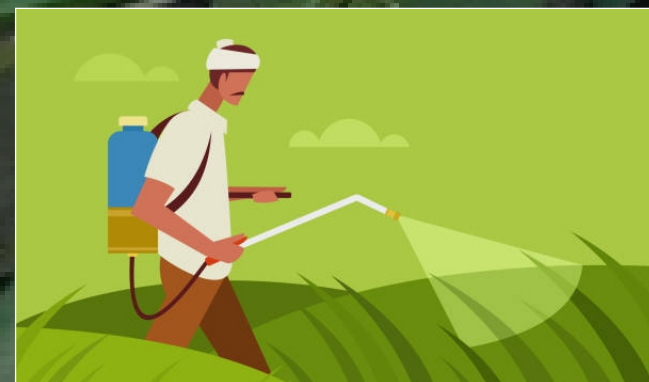
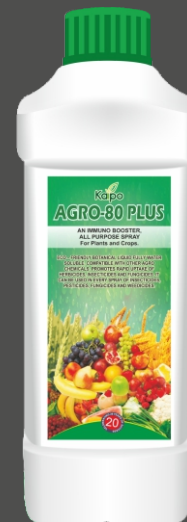
**ORGANIC MICRONUTRIENTS  
( 30ML )**

+

**ADD AGRO 80 PLUS  
( 50ML )**

+

**MIX WITH 15 LITRE  
WATER & SPRAY EVENLY**



**NOTE : REPEAT TILL FORMATION OF LEAF EXPANSION AND STARTING OPENING OF THE FLOWER BUD**

# FLOWERING STAGE TO FRUIT STAGE

**1st DAY**

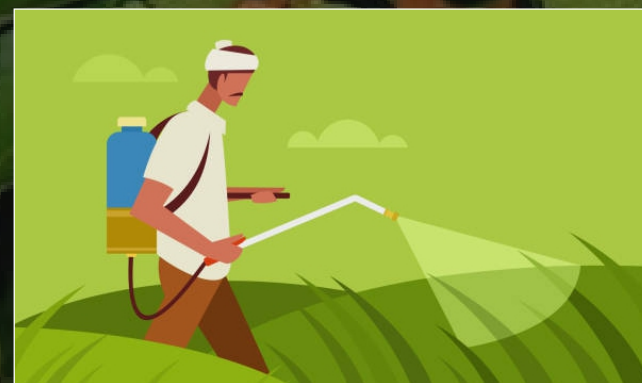
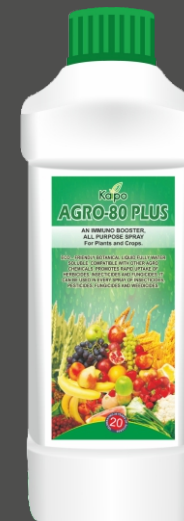
**AGRO FLOWER BOON  
( 30ML )**

+

**ADD AGRO 80 PLUS  
( 50ML )**

+

**MIX WITH 15 LITRE  
WATER & SPRAY EVENLY**





# FLOWERING STAGE TO FRUIT STAGE

**25TH DAY**

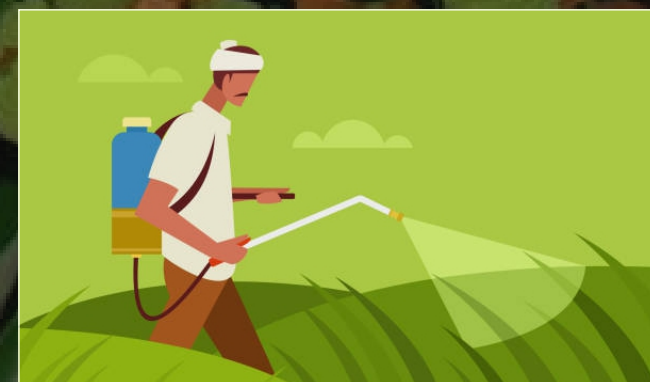
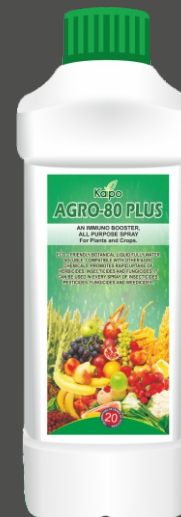
**AGRO CROP CARE  
( 30ML )**

+

**ADD AGRO 80 PLUS  
( 50ML )**

+

**MIX WITH 15 LITRE  
WATER & SPRAY EVENLY**





# FLOWERING STAGE TO FRUIT STAGE

**45th DAY**

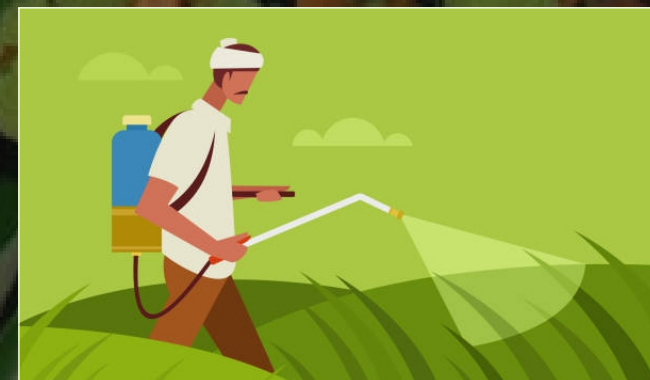
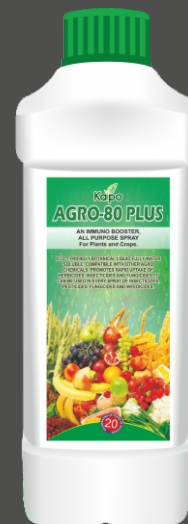
**ORGANIC MICRO  
NUTRIENTS ( 30ML )**

+

**ADD AGRO 80 PLUS  
( 50ML )**

+

**MIX WITH 15 LITRE  
WATER & SPRAY EVENLY**



**NOTE : REPEAT TILL FORMATION OF FRUIT COMPLETE**

# FRUIT INITIATION STAGE TO RIPENING STAGE

**1th DAY**

**POWER PLANT GROWTH  
REGULATORY (4 ML)**



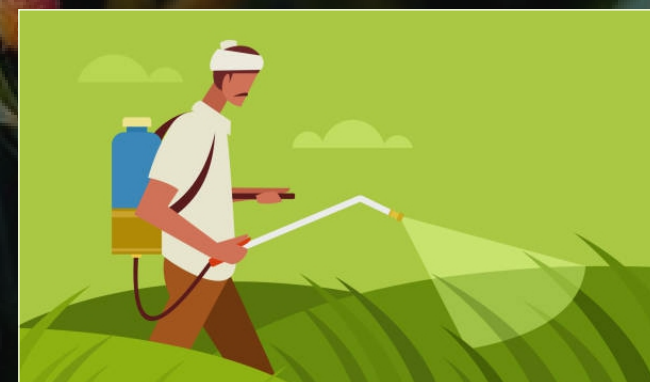
+

**ADD AGRO 80 PLUS  
( 50ML )**



+

**MIX WITH 15 LITRE  
WATER & SPRAY EVENLY**



# FRUIT INITIATION STAGE TO RIPENING STAGE

**25th DAY**

**AGRO CROP CARE  
( 30ML )**

+

**ADD AGRO 80 PLUS  
( 50ML )**

+

**MIX WITH 15 LITRE  
WATER & SPRAY EVENLY**





# FRUIT INITIATION STAGE TO RIPENING STAGE

**45th DAY**

**ORGANIC MICRO  
NUTRIENTS ( 30ML )**

+

**ADD AGRO 80 PLUS  
( 50ML )**

+

**MIX WITH 15 LITRE  
WATER & SPRAY EVENLY**



**NOTE : REPEAT TILL COLOUR OF FRUIT TURN GREEN TO REDDISH PINK**